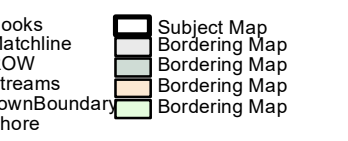


Original Base Maps JW Sewall Co  
Updates by GIS Mapping and Analysis  
City of South Portland Assessing Office  
These maps are intended to be used solely for the purpose of displaying the overall nature of parcels for Property Tax Assessments and should not be used for conveyances.

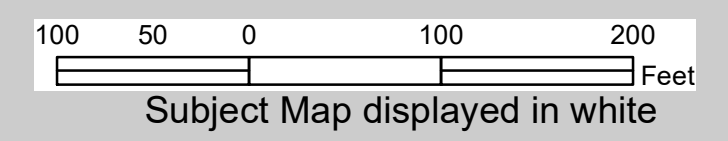
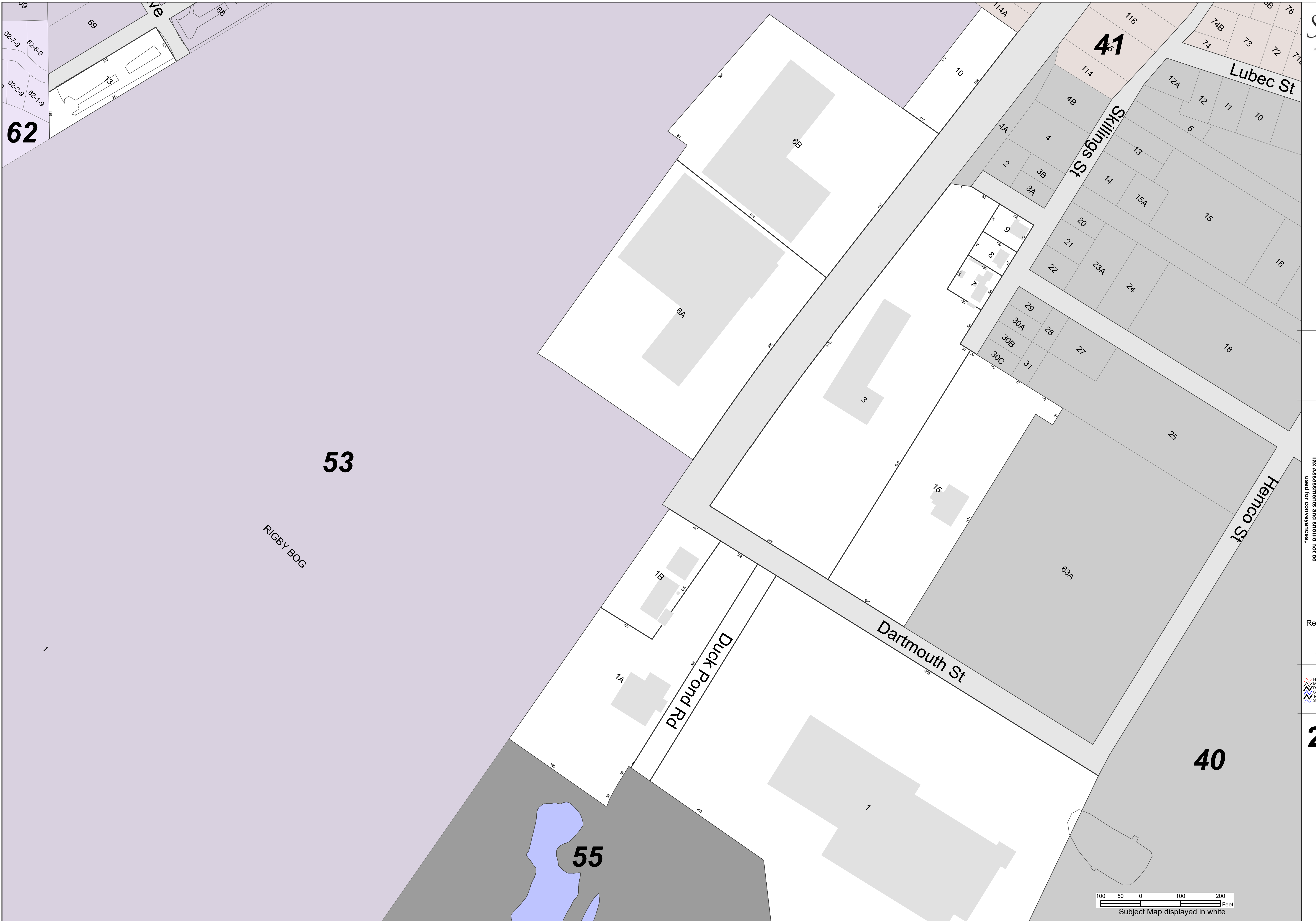
Revised to April 1st

Scale: = 100



2022

MAP: 54



Subject Map displayed in white