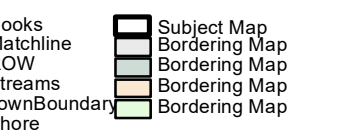


Original Base Maps JW Sewall Co
Updates by GIS Mapping and Analysis
City of South Portland Assessing Office
These maps are intended to be used
solely for the purpose of displaying
the overall nature of parcels for
Tax Assessments and should not be
used for conveyances.

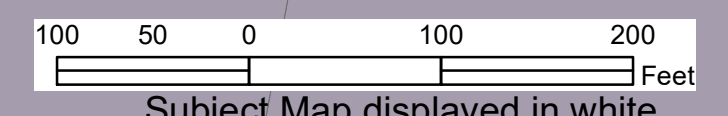
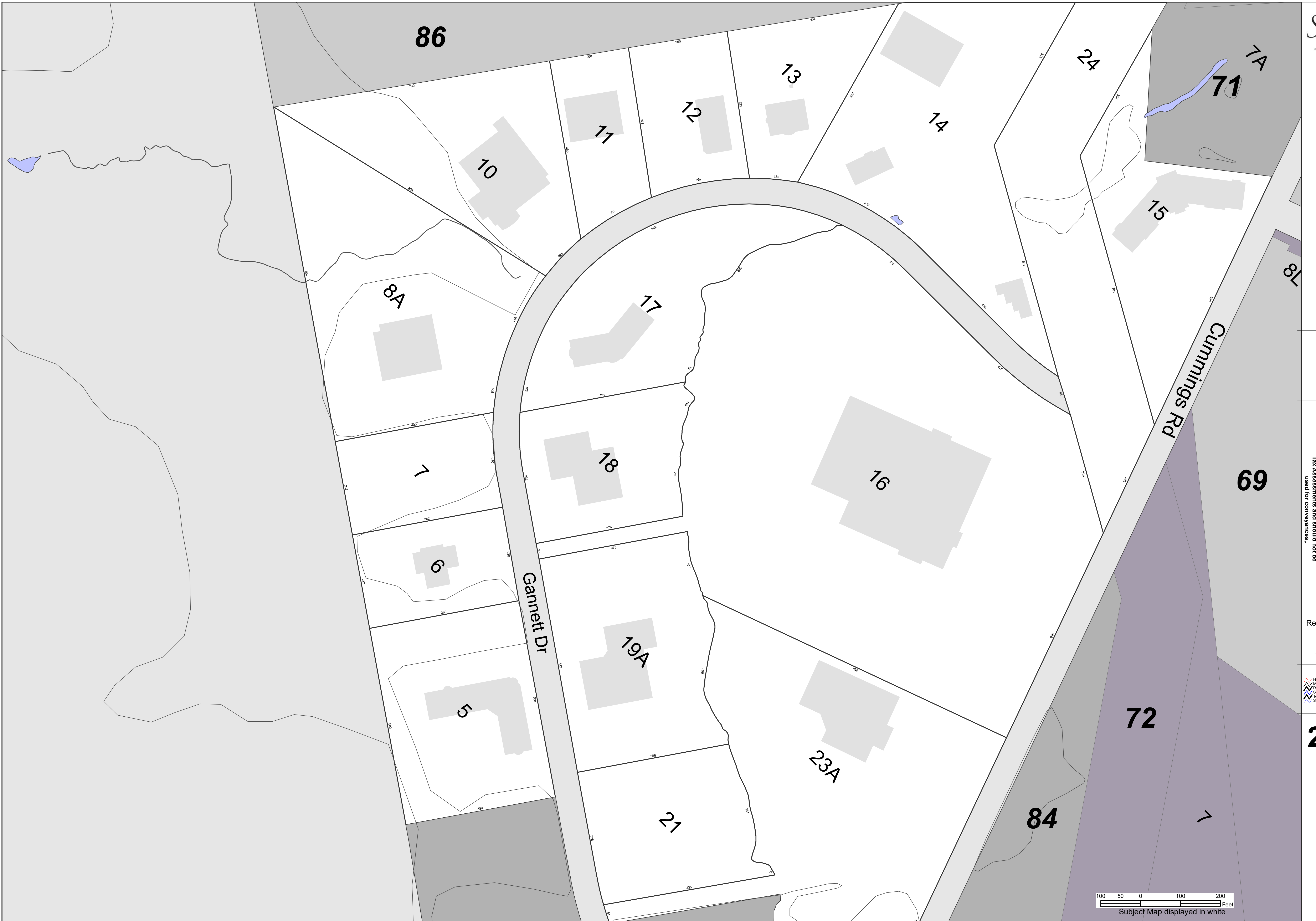
Revised to April 1st

Scale: = 100



2022

MAP: 85



Subject Map displayed in white